

Let's Talk: Immigrant Students & Families

December 13, 2023 | 5pm



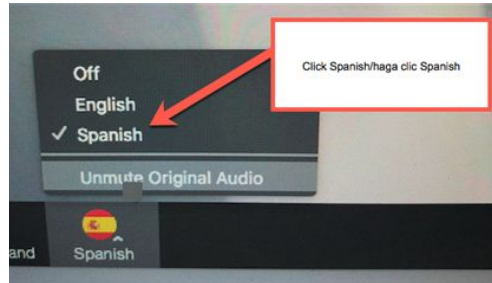
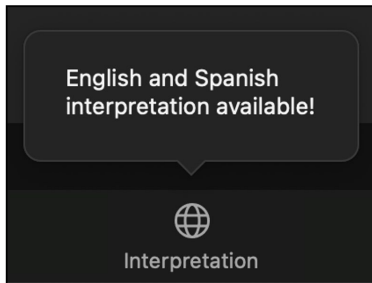
Welcome • Bienvenidos

Select Your Language / **Eliga su idioma**

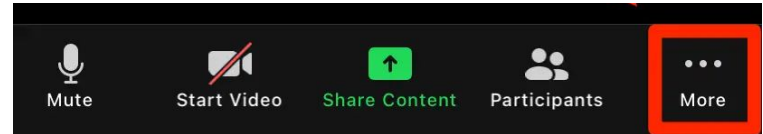


Oprima el botón marcado "Interpretation" (el globo) en la parte bajo de la pantalla. Seleccione "Spanish".

Computer / **Computadora**



Phone / **Por Telefono**



Announcements

- **Recording:** A recording of this webinar will be provided.
- **Q & A:** If you have a question, please drop it in the Zoom Q&A box. There will be a group Q&A portion at the end of the webinar.
- For closed captioning, click the "**Live Transcript**" button from the in-meeting Zoom toolbar and select one of the options from the menu.
- TCP is inclusive of all people and perspectives, except for hate. We do not tolerate malicious comments and will remove and report anyone who feels the need to disrupt the growth and peace of the space. Our objective is to hold a webinar where all people are safe and welcomed.

Land Acknowledgement

We acknowledge that The Children's Partnership's headquarters is on the traditional land of the Chumash and Tongva (Gabrieleno) People. Along with this acknowledgement may we strive to create a future that embraces justice, equity, and harmony, where the voices and experiences of all Native peoples are uplifted and celebrated. With gratitude and humility, we honor the Native peoples of this area in Southern California and express our commitment to building a more inclusive and equitable community for all.

Introductions

Please introduce yourself in the chat :)

Who we are:

- ★ Gabby Benitez, Senior Policy Associate, The Children's Partnership
- ★ Hope Nakamura, Of Counsel, Legal Aid Society of San Mateo Co.
- ★ Sam Finn, Director of Newcomer Policy & Practice, Californians Together
- ★ Carlos Alarcon, Health & Public Benefits Policy Analyst, California Immigrant Policy Center
- ★ Ebony Durham, Community Engagement & Advocacy Associate, The Children's Partnership



Agenda

1. Public Charge: What is public charge, when it applies and when it does not apply?
2. Medi-Cal Expansion: How to access Medi-Cal, who should apply, and the importance of Medi-Cal health coverage
3. Newcomer Rights
4. Resources
5. Questions
6. Reminders and Raffle!

Public Charge

Hope Nakamura, Legal Aid Society of San Mateo County

PUBLIC CHARGE IS A SIMPLE TEST

The government determines if the applicant is likely to ***depend primarily on public services in the future.***

- The government can deny ***some*** immigration applications based on this decision
- To make the decision, the official looks at ***many*** factors:
 - ***Health, age, skills/education, family/sponsor income, use of two types of benefits***

https://www.chhs.ca.gov/wp-content/uploads/2022/09/CalHHSPublicChargeGuideUPDATED_Sep22.pdf

HEALTHCARE IS A HUMAN RIGHT REGARDLESS OF IMMIGRATION STATUS

THE ABC's of PUBLIC CHARGE

- 1) Does public charge **APPLY**?
- 2) What **BENEFITS** are safe to use?
- 3) Let's **CHECK** to make sure!

WHEN PUBLIC CHARGE APPLIES

DOES PUBLIC CHARGE AFFECT YOU?

Do you already have a green card?



PUBLIC CHARGE DOESN'T APPLY.

But, if you use the listed benefits and plan to leave the U.S. for more than 6 months, get immigration legal advice.

Are you applying for:

- Citizenship
- Green card renewal
- DACA renewal
- U or T Visa
- Asylum or Refugee status
- TPS
- VAWA
- Special Immigrant Juvenile Status
- Green Card based on U/T/SIJ, VAWA or Asylum



PUBLIC CHARGE DOESN'T APPLY for these applications.

You may use any benefits for which you qualify.

Are you applying for a green card through a family member?



A PUBLIC CHARGE TEST MAY APPLY.

- USCIS (immigration) weighs many factors (income, health, skills) in the test, including the listed benefits.
- **Family members may use any benefits for which they qualify.**
- Talk to a qualified lawyer if you have concerns.



COUNTED BENEFITS

ONLY TWO Kinds of BENEFITS are considered in Public Charge test.

The Public Charge test weighs **many factors** (health, skills, education, sponsor, etc.) and only **these benefits** *obtained for the immigrant*.

- **Monthly cash aid benefits**
 - SSI
 - CalWORKs
 - CAPI
 - General Assistance/Relief
- **Long-term, institutional care paid by Medi-Cal**



Family members may use any benefits for which they qualify.



CHECK IF UNSURE



[HOME](#) [PUBLIC CHARGE](#) [FIND HELP](#) [RESOURCES](#)

[USE THE GUIDE](#)

[EN](#) [ESPAÑOL](#) [中文](#)

Get specific information for California

National ▼

The public charge test has changed and should be easier for most people to pass. Get the facts about public charge & immigration.

Rules about public benefit programs and immigrants are confusing. But benefits can help your family stay healthy and thrive.

Click [Use the Guide](#) to see if public benefits could affect different immigration options.

[Use the Guide](#)



KeepYourBenefits.org

HEALTHCARE IS A HUMAN RIGHT REGARDLESS OF IMMIGRATION STATUS

Medi-Cal Expansion

Carlos Alarcon, California Immigrant Policy Center

Medi-Cal Adult Expansion

Starting January 1st, 2024

Immigration Status Will No Longer be a Barrier to Full Scope
Medi-Cal

Around 707,000 Newly Eligible Californians*

Health4All Journey

Health4All Coalition Began as a Direct Response to the ACA's Exclusion of Undocumented Communities

- Health4All Kids (**0-18**) in 2016
- Health4All Young Adults (**19-25**) in 2020
- Health4All Older Adults (**50+**) in 2021
- Health4All Adults (**26-49**) in 2024

Medi-Cal is **NOT** Considered as part of the Public Charge test

What is Covered Under Medi-Cal?

- Dental and Vision
- Outpatient services
- Emergency services
- Hospitalization
- Maternity and Newborn care
- Mental Health and Substance Use Disorder Services
- Prescription Drugs
- Physical and Occupational Therapy/Devices
- Laboratory Services
- Preventive and Wellness Services
 - Birth Control
 - Chronic Disease Management
- Pediatric Services
- Long Term Care Services

Medi-Cal Eligibility

Can Qualify if You:

- Meet the Income Eligibility
- Are 65+ or Under 21
- Are Living With a Disability
- Are Pregnant
- Are In a Skilled Nursing or Intermediate Care Home

Income Eligibility Differs for Different Groups

- [tinyurl.com/FPL-Chart](https://www.tinyurl.com/FPL-Chart)

If you have Restricted Scope (Emergency) Medi-Cal then you will **automatically be transferred to Full-Scope on Jan 1st**

Enroll in Medi-Cal

Enroll in Person at Your County Office

- Click [Here](#) to Find Your County Office

Enroll Online

- Covered California Application Will Automatically Transfer You to Medi-Cal Process
- Click [Here](#) for Online Application

Find Enrollment Assistance Near You

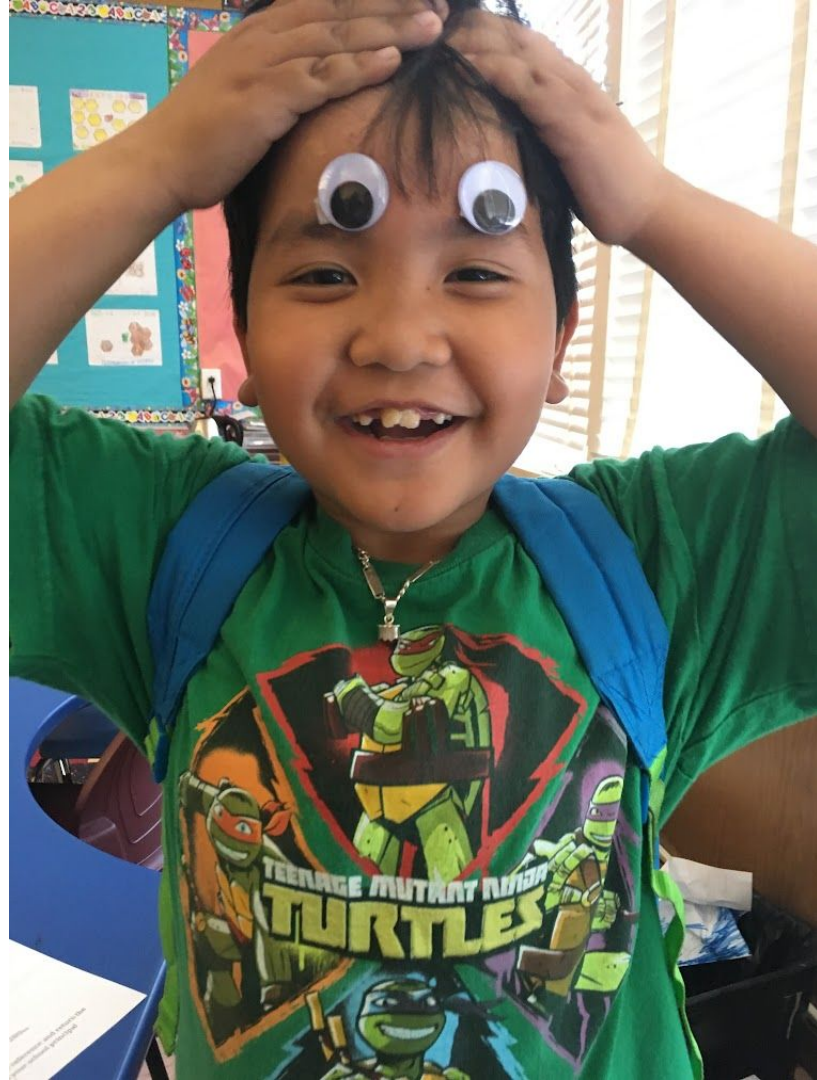
- tinyurl.com/Enroll-Assistance or ALLINforHealth.org

Newcomer Education Rights

Sam Finn, Californians Together

Outline

- ❖ Defining Our Group
- ❖ State Data
- ❖ Federal Court Rulings
- ❖ State Law
- ❖ Right to Free Public Ed
- ❖ Enrollment
- ❖ Confidentiality
- ❖ Communication
- ❖ English Learner Assessment



Who Are Newcomers?

In California, a “newcomer” is defined as:

- Three years or less in U.S. schools
- Not born in any U.S. state
- Between the ages of 3 and 21

This is the same as the federal definition for an “immigrant student”

Newcomers are a diverse group of students across many characteristics:

- Home Language & English
- Socioeconomic Status
- SIFE/SLIFE
- Refugee/Asylee Status
- Documentation
- Family Accompaniment

A Look at Newcomer Student Data & Characteristics (2020–2021)

Big Picture Context

- 151,996 newcomers
- 13% of all CA ELs
- 2.5% all CA students

Group Characteristics

- 92% English Learners
- 43% Spanish home language
- 67% eligible for free or reduced price meals



1 in 40 CA students is a newcomer

There are a lot of newcomers in California!

A couple reference points:

At 151,996 Title III Immigrant Students in California, there were more newcomers in 2020-20221 than...

... all students in 23 CA counties
combined

... students in 8 different US
states

Check out Tableau Dashboards for district-level detail: bit.ly/CA_Newcomer_Data

Federal Rulings Support Accessible Education for All Newcomers/Immigrants

- ✓ *Lau v Nichols* ('74): LEAs must take affirmative steps to ensure ELs can meaningfully participate in ed programs & services
- ✓ *Plyler v Doe* ('81): Education for all children regardless of status
- ✓ *Castañeda v Pickard* ('82): 3-pronged test for effective instruction
 - based on sound educational theory
 - implemented effectively with resources for personnel, instructional materials, and space
 - proven effective in overcoming language barriers after a trial period

California Law – AB 699

This law was passed as a response to Trump in 2018.

It explicitly affirms and builds on existing law, naming schools as safe spaces that welcome, serve, & protect immigrants regardless of immigration status

The law requires that school boards to adopt model policies for supporting immigrant students and their rights by July 2018.

[Promoting a Safe and Secure Learning Environment for All: Guidance and Model Policies to Assist California's K-12 Schools in Responding to Immigration Issues](#)

Xavier Becerra, California Attorney General, April 2018

Right to a Free Public Education

In California:

- All children have the right to a free public education.
- All children ages 6 to 18 years must be enrolled in school.
- All students and staff have the right to attend safe, secure, and peaceful schools.
- All students have a right to be in a public school learning environment free from discrimination, harassment, bullying, violence, and intimidation.
- All students have equal opportunity to participate in any program or activity offered by the school, and cannot be discriminated against based on their race, nationality, gender, religion, or immigration status, among other characteristics.

Promoting a Safe and Secure Learning Environment for All: Guidance and Model Policies to Assist California's K-12 Schools in Responding to Immigration Issues

Xavier Becerra, California Attorney General, April 2018

Information Required for School Enrollment

- When enrolling a child, schools must accept a variety of documents from the student's parent or guardian to demonstrate proof of child's age or residency.
- You never have to provide information about citizenship/immigration status to have your child enrolled in school. Also, you never have to provide a Social Security number to have your child enrolled in school.

Promoting a Safe and Secure Learning Environment for All: Guidance and Model Policies to Assist California's K-12 Schools in Responding to Immigration Issues

Xavier Becerra, California Attorney General, April 2018

Confidentiality of Personal Information

- Federal and state laws protect student education records and personal information. These laws generally require that schools get written consent from parents or guardians before releasing student information, unless the release of information is for educational purposes, is already public, or is in response to a court order or subpoena.
- Some schools collect and provide publicly basic student “directory information.” If they do, then each year, your child’s school district must provide parents/guardians with written notice of the school’s directory information policy, and let you know of your option to refuse release of your child’s information in the directory.

Promoting a Safe and Secure Learning Environment for All: Guidance and Model Policies to Assist California’s K-12 Schools in Responding to Immigration Issues

Xavier Becerra, California Attorney General, April 2018

Communication

If 15 percent or more of students enrolled in a public school speak a single primary language other than English all notices, reports, statements, or records sent to the parent or guardian of any such pupil by the public school or school district shall, in addition to being written in English, be written in the primary language, and may be responded to either in English or the primary language.

[California Education Code Section 48985\(a\)](#)

English Learner Assessment

- Schools will have you fill out a Home Language Survey to know what languages are spoken at home, and give your child a test to see if there is a need for language support
- The ELPAC (English Language Proficiency Assessment for California) is the test used to determine a student's level of English proficiency
- Even students who speak English well may be identified as "English Learners" due to the rigorous nature of the test.
- If your child is identified as an English learner, the school must notify you in writing within 30 days of the school year starting.
- The school should provide info about your child's language proficiency level, programs, and services available to meet your child's educational needs, and your right to opt your child out of a program or service for English learners.



Questions?



Resources

Ebony Durham

Resources for Families

School & Education

- [CA Attorney General K-12 Immigration Guidance](#)
- [Federal English Learner Family Toolkit](#)
- [Supporting Resilience in Schools](#)
- [Migrant Education Family Biliiteracy Program](#)
- [Options for Undocumented High School Students](#)
- [Resources for Applying to College as an undocumented Students](#)
- [Resources for undocumented college students](#)
- [Higher Education Technical Assistance Project](#)

Housing

- [Resources for Homeless Children and Youth](#)
- [Mercy Housing](#)

Legal & Social Service Aid

- <https://keepyourbenefits.org>
- [Public charge Attorney/Provider List](#)

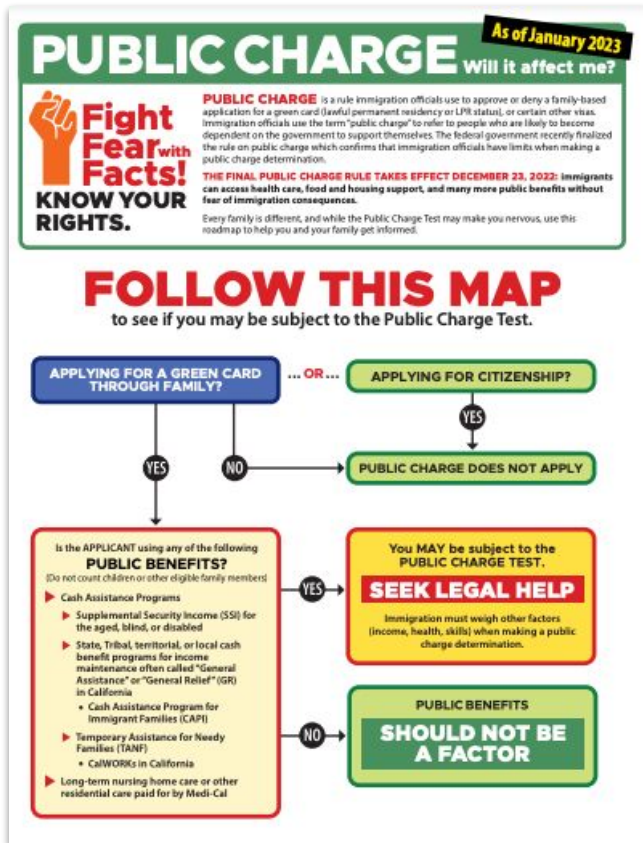
Medi-Cal

- Medi-Cal Income Eligibility Chart: <http://tinyurl.com/FPL-Chart>
- Medi-Cal Enrollment assistance: ALLINforHealth.org or tinyurl.com/Enroll-Assistance

Family/Parent Resources

- [Parent Engagement Modules Series](#)
- [Family Preparedness Plan](#)
- [Federal English Learner Family Toolkit](#)
- [CA- Protecting Immigrant Families Coalition Resource Page](#)

Find Out Whether You May Be Subject to the Public Charge Test



Every family is different, and while the Public Charge Test may make you nervous, use this roadmap to help you and your family get informed.

allinforhealth.org/public-charge



Reminders

Ebony Durham

Medi-Cal Renewals!

1. Update changes to Medi-Cal
 - Start account at BenefitsCal.com
2. Check mail for large envelope
3. Submit renewal forms
 - Submit by phone, online, mail, in person

Find help at ALLINforHealth.org



Enroll. Get Care. Renew.

Renew your **Medi-Cal** coverage!

Important Information for 2023 and 2024:

If you or a family member has Medi-Cal coverage, you will need to renew at a designated point between April 2023 and May 2024. Annual renewals are usually due in the same month you first enrolled in Medi-Cal. For example, if you first enrolled in June of 2022, you will need to renew in June of 2023.

- 1 Update your contact information.** Let your county Medi-Cal office know about any changes in your contact information (mailing address, phone number, email) so they can contact you with information about how to renew your coverage.
 - 2 Check your mail.** When it is time to renew coverage, Medi-Cal will mail you a letter to let you know if you need to complete a renewal form or if your renewal can be completed automatically.
 - 3 Complete your renewal form.** If you receive a renewal form, your coverage will not be renewed unless you complete it. Renewal forms will be sent in  a **YELLOW ENVELOPE**. Fill out the form and answer any county follow up questions right away by phone, online, mail or in person to help avoid a gap in your coverage.
- Find your county office at dhcs.ca.gov/COL or call **(800) 541-5555**. To renew your Medi-Cal coverage and report changes, set up an account online at benefitscal.com



OR GO TO:
allinforhealth.org

Newcomer Education Webinar Series

Exploring the Field of Newcomer Education: The CalNEW 2023-2024 Webinar Series



[Register at bit.ly/calnewseries1](https://bit.ly/calnewseries1)

**Enter for a chance to
win \$50 !!**



**3 winners will be
randomly selected!**

**Please fill out this quick
[evaluation](#)**

We
appreciate
your
feedback!

**For more resources and
information visit our
website:**

ALLinForHealth.org



Contact Us

Gabby Benitez

Senior Policy Associate
gbenitez@childrenspartnership.org

Hope Nakamura

Legal Aid Society of San Mateo
hnakamura@legalaidsmc.org

Carlos Alarcon

Health & Public Benefits Policy Analyst
calarcon@caimmigrant.org

Sam Finn

Director of Newcomer Policy & Practice,
Californians Together
sam@californianstogether.org

Ebony Durham

Community Engagement & Advocacy
Associate
edurham@childrenspartnership.org

